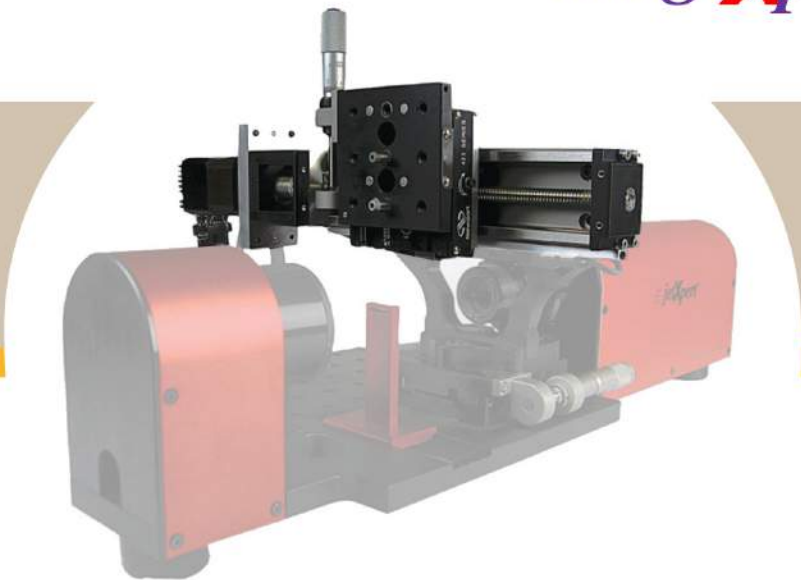


JetXpert Motion Option

Fully integrated system to automatically measure nozzles across the printhead



FEATURES AND BENEFITS

The JetXpert Motion Option adds a software controlled motorized stage for moving the printhead side to side. Using a simple GUI, users of JetXpert with Motion can scan across the head, making measurements and recording data from each nozzle.

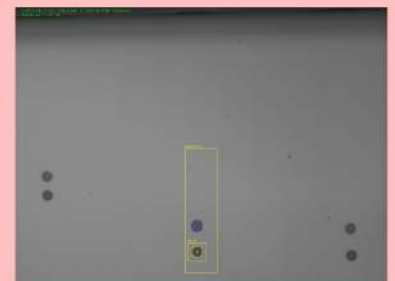
Automation

- Automatically run standard analysis tools, or user customized analysis tools, on each nozzle across the head
- Data is automatically saved in excel readable format.
- Distance between nozzles is preprogrammed, for each printhead



Missing Jets

- Automated sustainability testing saves engineering time and material over more traditional methods
- User defines both the time between scans, and number of scans.
- Easy-to-read data report includes list of missing jets, at each scan time



User Controlled Motion

- Included joystick allows the user to directly control printhead position
- Single Move controls make it easy to step between nozzles, or move directly to any individual nozzle. Just type a number and go.



Visit www.jetxpert.com for more information